

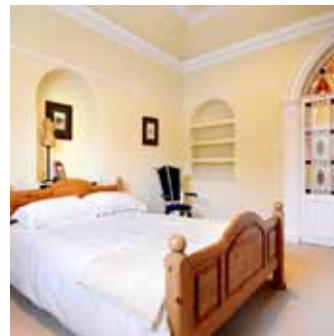


HUNTER-GATHERER

DETAILS

Fitzwilliam Place Flat 2

For more information
please contact Sarah Lamb:
+353 87 2314 757
Sarah@Hunter-Gatherer.ie



Flat 2, Fitzwilliam Place

Flat 2 is a 2 double-bedroom flat, located on the Ground Floor and Return of the house, and is approximately 870 sq ft (80.8 m²). It has lovely high ceilings of 14 ft and is positioned at the back of the house so it gets wonderful morning light.

You walk from a small hallway into a large living room with a large picture-sash window with working shutters. There are two sofas, a coffee table, a working fireplace and a dining table with six chairs.

The kitchen is positioned off the living room. It has plenty of cupboard space, an electric oven, cooking hob, fridge/freezer, dishwasher, microwave and washer/dryer; and is fitted-out with glasses, delph, cutlery, utensils, pots and pans - everything you might need. There is also a mezzanine space above the kitchen, which can be used for extra storage.

Down a couple of steps to the Return, you will find a modern bathroom containing a WC, a basin with under-sink storage & a vanity mirror above, and a bath with overhead Grohe power shower. The bathroom also has a heated towel rail and underfloor heating.

The smaller double-bedroom is on this level, and it has plenty of storage with wardrobes and a large hot-press. Up a spiral staircase and through a magnificent stained-glass door is the Master double-bedroom with a 5 ft bed, wardrobes and shelving.

All our flats have a TV, DVD player and high speed wireless broadband. Each flat is equipped with an iron and ironing board, vacuum cleaner and clothes rack. Our rates include bed linen & towels and we can arrange for the flats to be fully serviced, to include all utilities and a weekly clean in your rate. On street car parking can be arranged, subject to Dublin City Council regulations and charges.



HUNTER-GATHERER

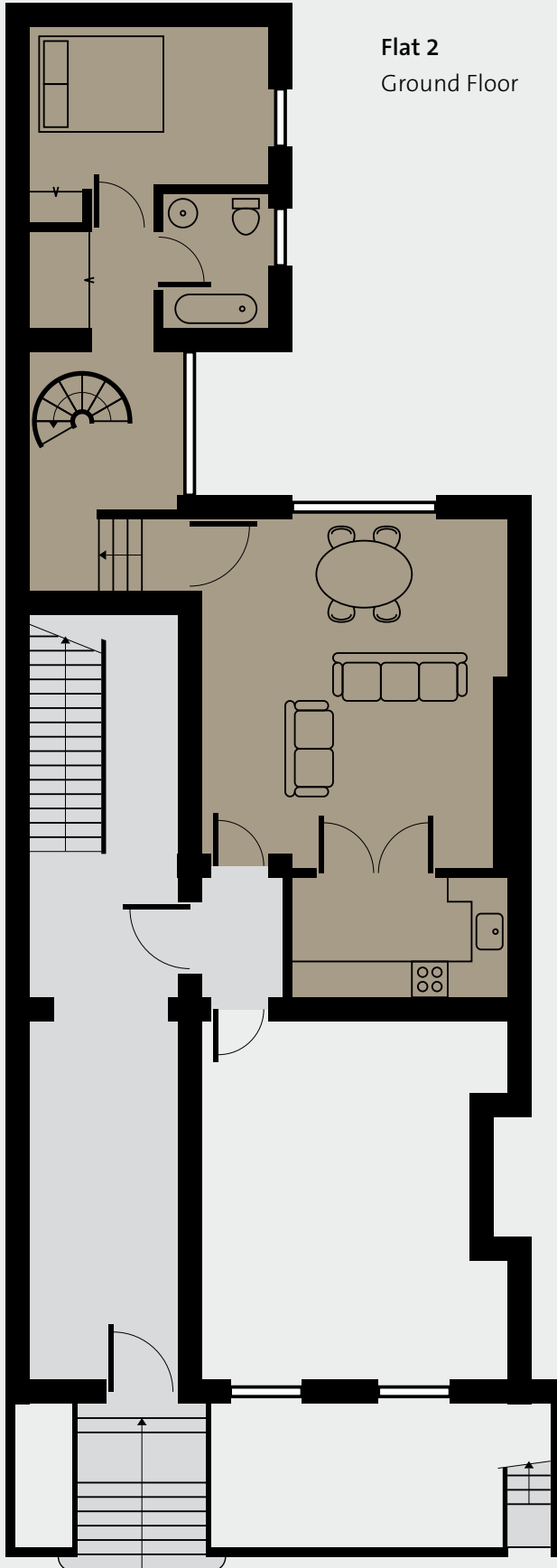
FLOORPLAN

Fitzwilliam Place

Flat 2

For more information
please contact Sarah Lamb:
+353 87 2314 757
Sarah@Hunter-Gatherer.ie

Flat 2
Ground Floor



Flat 2
First Floor Return

