



HUNTER-GATHERER

DETAILS

Fitzwilliam Place

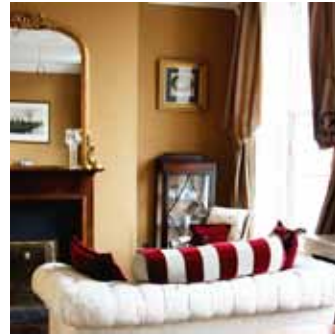
Flat 4

For more information

please contact Sarah Lamb:

+353 87 2314 757

Sarah@Hunter-Gatherer.ie



Flat 4, Fitzwilliam Place

Flat 4 is a luxury 2 double-bedroom flat, located on the Second Floor of the house. It is a duplex flat of approximately 850 sq ft (79 m²) and it has lovely high ceilings of 12 ft.

Painted in Farrow & Ball paints throughout, you enter the flat through its beautiful, reclaimed mahogany panelled hallway. The hallway has under-stairs storage and an antique coat rack; and the full stairs leads to the Second Floor bedrooms and bathroom.

Walk through a glass panelled door to a large, bright, West-facing living room, with three picture-sash windows and views towards Fitzwilliam Square. This room gets wonderful evening light and has original stripped wooden floorboards. Features include: wooden shutters, ornate cornicing and a working fireplace. There is a dining table with six chairs, a comfortable sofa and an antique chandelier.

The kitchen, with plenty of cupboard space, is cleverly positioned off the living room. It has an electric oven, cooking hob, fridge/ freezer, microwave, dishwasher and washer/dryer; and is fitted-out with glasses, delph, cutlery, utensils, pots & pans - everything you might need.

Up the stairs is the Master double-bedroom with 5 ft bed and extensive wardrobes. There is also a second, smaller, double-bedroom with a wardrobe and hot-press.

The black and white marble tile bathroom contains an oversized power shower and a stand-alone, double-ended, slipper bath. The bathroom also has under-floor heating, a heated towel rail, a large basin and old fashioned high-level-cistern WC.

All our flats have a TV, DVD player and high speed wireless broadband. Each flat is equipped with an iron and ironing board, vacuum cleaner and clothes rack. Our rates include bed linen & towels and we can arrange for the flats to be fully serviced, to include all utilities and a weekly clean in your rate. On street car parking can be arranged, subject to Dublin City Council regulations and charges.



HUNTER-GATHERER

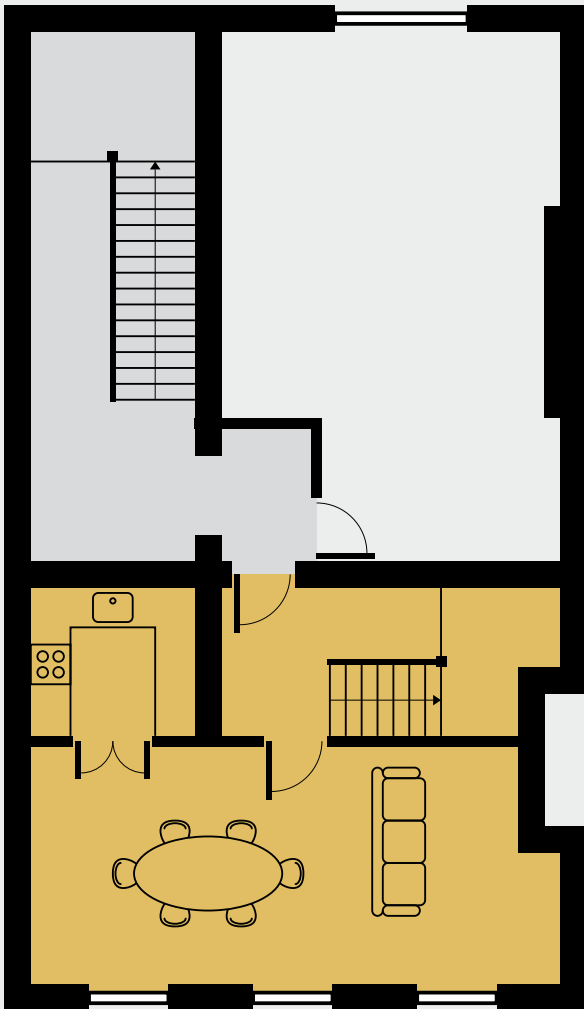
FLOORPLAN

Fitzwilliam Place

Flat 4

For more information
please contact Sarah Lamb:
+353 87 2314 757
Sarah@Hunter-Gatherer.ie

Flat 4
Second Floor



Flat 4
Third Floor

